



GW618



Solar Rattan Stake Lights (Pack of 4)

Thank you for purchasing these Solar Rattan Stake Lights from Streetwize Garden. The instructions written below provide you with guidance on how to get the best use out of the product. We highly recommend reading these instructions before using the product.

Assembly Instructions

1. Remove the protective film from the solar panels.
 2. Push the ground spike into soft ground such as a flower/garden bed.
-

Charging & Operation

These solar lights come with a solar panel. During the day, the panel absorbs solar energy to charge the included rechargeable battery. At night, the LED light automatically illuminates.

Before using this product for the first time, we advise that you fully charge the battery by placing the stake lights under direct sunlight for a full 24-hour period.

1. There is an ON/OFF switch at the back of the solar panel case. Pull out the plastic lamp shade gently and find the switch. Push the switch to the “ON” position. Then place the light in a sunny location.
2. Charge the solar product by placing it under direct sunlight for at least 8 hours.
3. The light will work automatically. It will charge under direct sunlight during the day time and illuminate at night.

NOTE: In order to test the light simply cover the solar panel with your hand and the light should turn on automatically.

Important

1. Install the solar lights in an area where they can get direct sunlight.
2. Leave the switch in the “ON” position.
3. Place the solar light in a location that is away from other light sources at night, such as street lights. Artificial lighting may prevent the product from turning on automatically at night.
4. Duration of solar light illumination depends on the solar product’s level of sunlight exposure, geographical location, weather conditions and the hours of daylight.

Maintenance & Troubleshooting

1. Make sure the switch is set to the “ON” position.
 2. Keep the solar panel clean.
 3. If a solar product does not light up after it has been used for around 8 – 12 months, replace the rechargeable battery as it may be weak or worn out. (Battery 1x AAA 1.2V 100mAh, Ni-MH Rechargeable). Never use another battery with a different spec.
-

Health & Safety

- Do not use the device if the insulation or bulb are damaged.
 - Never allow the product to come into contact with excessive heat or naked flame.
 - This product is not intended for use by children or individuals with reduced physical, sensory, or mental capabilities unless supervised by a responsible adult. Small parts may present a choking hazard. Always keep out of reach of children.
 - When disposing of this product, please do so in line with your local authority guidelines.
-

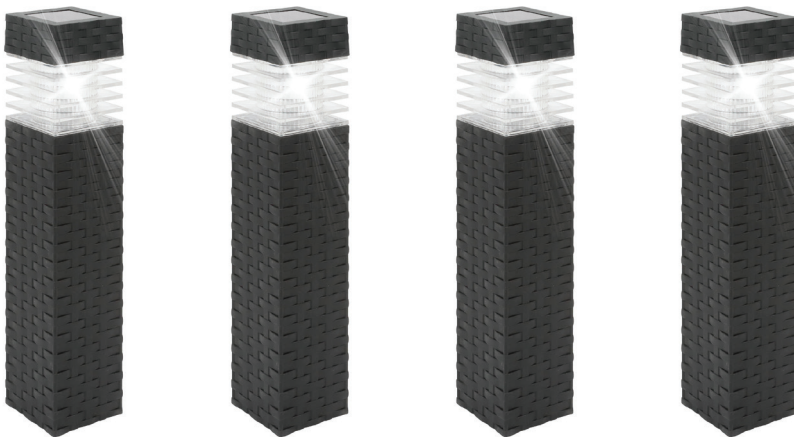
Battery Replacement

1. Unscrew the battery compartment cover by using a Phillips head screwdriver (not included).
2. Remove the exhausted battery and install 1x AAA 1.2V 100mAh, Ni-MH rechargeable battery according to the +/- polarity. Open the compartment carefully and ensure that wire inside the battery terminals is not damaged.
3. Replace battery compartment cover, screw it back into position and make sure it is properly sealed.

Attention: Batteries must be recycled or disposed of in accordance with your local authority guidelines. Do not dispose of these near an exposed heat source, an open flame, or in your normal household waste. If you plan to store the product for an extended period, remove the battery from it. Removal or replacement of the battery should only be done by an adult or with adult supervision.

Technical Specifications

Product Name	Solar Rattan Stake Lights
Supplier Code	GW618
Quantity	Pack of 4
Battery	1x AAA 1.2V 100mAh, Ni-MH rechargeable
Size	(H)39.5 x (W)6 x (D)6cm
LED	White
Solar Panel	Amorphous



Streetwize,
Suite GA, Marsland House,
Marsland Road, Sale M33 3AQ

For Product Support:
support@streetwize.co.uk

EU Regd. Address:
Ace Supply Co (Europe) Ltd.
D02 A098, Republic of Ireland

www.streetwize.co.uk