



GW422

Solar Hanging Bird Feeder with LED

Information for use _____

Thank you for purchasing this product from Gardenwize. The instructions written below provide you with guidance on how to get best use of the product. We highly advise that you read these instructions before using the product.

Whats in the Box?

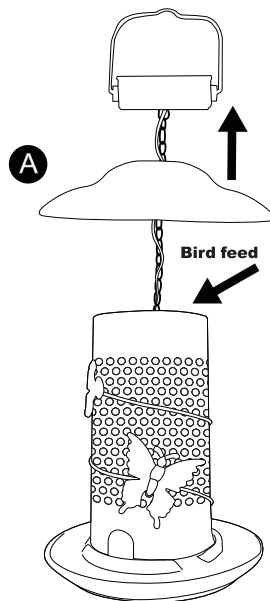
- Fence lights
 - Screws
 - Plugs
-

How It Works?

This hanging solar light with an elegantly designed bird feeder comes with a solar panel that has a built-in rechargeable battery. During the day, this solar panel absorbs solar energy which gets stored in the rechargeable battery. At night, the LED lights will automatically illuminate.

Assembly Instructions

1. Carefully remove the product from its packaging.
2. Lift the lid (A) and fill the bird feeder with bird feed, replace lid A.
3. Hang the solar product in a suitable location where the solar panel can get direct sunlight (please see next section).



Where to Put This Solar Light?

The solar panel on these fence lights **MUST** be under **DIRECT SUNLIGHT** in order for the battery to charge.

We highly advise to avoid positioning the solar panel where there is a lot of shade or there is low light as this will prevent the battery from getting charged. And we also advise to not position the light near sources of artificial light that come on at night such as street lights as this will affect performance of the light.

Other factors such as weather conditions and the number of hours of daylight will also affect the performance as well.

Turning On and Off

The switch is located on the top of the unit, next to the solar panel. Here, you can set the switch to either “ON” or “OFF”.

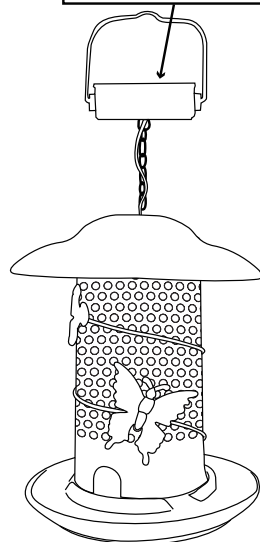
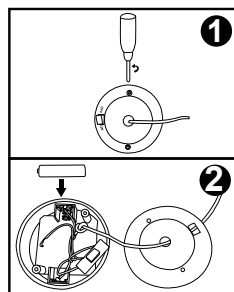
Maintenance & Troubleshooting

- Make sure the switch is set to “ON”.
 - Keep the solar panel clean.
 - If a solar product does not light up after it has been used for around 8 – 12 months, replace the rechargeable battery as it may be weak or worn out. (Battery 1 pc “AA” 1.2V 600Mah, Ni-MH, Rechargeable). Never use another battery with a different spec.
-

Battery Replacement

1. Unscrew the battery compartment cover (found at the base) by using a Phillips head screwdriver (not included).
 2. Open the compartment carefully and ensure that the battery terminals are not damaged.
 3. Remove the old depleted battery and replace with 1 x new AA rechargeable battery.
 4. Secure the battery compartment in place using the screws.
-

ATTENTION: Batteries must be recycled or disposed of in accordance with your local authority guidelines. Do not dispose of these near an exposed heat source or open flame or into your normal household waste. Remove the battery from the product if it is to be stored for a long period of time. Removal and/or replacement of the battery should only be carried out by an adult or under adult supervision.



Health & Safety

- Do not use the lights if the insulation or bulb have been damaged.
- Never allow the product to come into contact with excessive heat or naked flame.
- This product is not a toy. Keep away from pets and children, ensuring that children are supervised at all times.
- When disposing of this product, please do so in line with your local authority guidelines.

Technical Specifications

Name	Solar - Hanging Bird Feeder with LED
Supplier Code	GW422
Battery	1.2V AA 600mAh Ni-MH rechargeable battery



Streetwize, Ashburton Road West,
Trafford Park, Manchester, M17 1RY

For Product Support:

E: support@streetwizeaccessories.com

T: +44 (0)161 447 8597

For Trade Enquiries:

E: sales@streetwizeaccessories.com

T: +44 (0)161 447 8580

EU Regd. Address: Ace Supply Co (Europe) Ltd. D02 A098, ROI

www.streetwizeaccessories.com