

**DMD**  
COLLECTIVE

DMDIM1

---

# IceWhiz Ice Cube Maker Machine

---

Information for use



Thank you for purchasing the DMD IceWhiz Ice-Maker Machine. This appliance is the ultimate solution for all your ice-making needs. With this easy-to-operate ice maker, you can have ice cubes in just 6–8 minutes. This appliance is suitable for families, people who host in their homes, staff kitchens in hotels, catering settings, and much more. In order to avoid misuse, please read the instruction manual carefully before using this product and retain for future reference.

## **Health and Safety Guidelines**

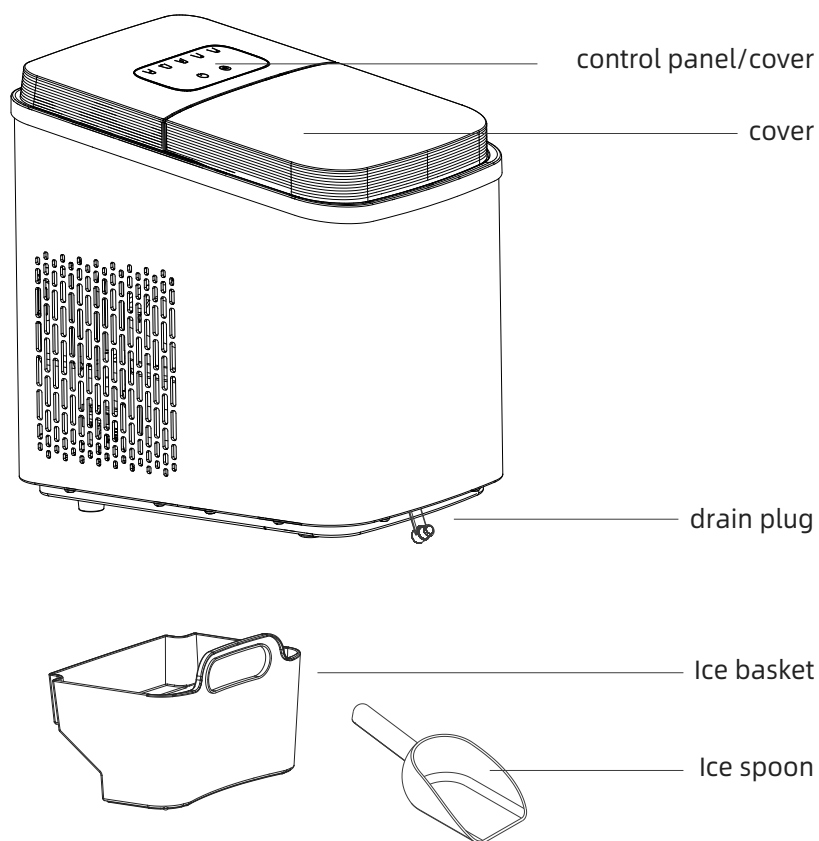
- Always unplug the unit when not in use, before cleaning, or when adding or removing parts. Please read the instructions carefully before using any appliance.
- Always ensure that the voltage on the rating label corresponds to the mains voltage in your home.
- Incorrect operation and use can damage the appliance and cause injury to the user.
- The appliance is intended for household use only. Commercial use invalidates the warranty, and the supplier cannot be held responsible for injury or damage caused when using the appliance for any other purpose than that intended.
- Do not let children use this appliance unsupervised.
- Check the power cord and plug regularly for any damage. To prevent an electrical hazard, the manufacturer will need to replace the cord or plug if it is damaged.
- Do not use the appliance if it has been dropped or damaged in any way. If the unit is damaged, take it in for examination and/or repair by an authorized service agent.
- To reduce the risk of electric shock, do not immerse or expose the motor assembly, plug, or power cord to water or any other liquid.
- Never immerse the unit in water or any other liquid for cleaning purposes. Do not reach for an appliance that has fallen into the water. Unplug immediately.
- Remove the plug from the socket by gripping the plug. Do not pull on the cord to disconnect the appliance from the mains.
- Injury, fire, or electric shock could result from the use of accessory attachments that the manufacturer has not approved or supplied.
- A short cord is provided to reduce the hazards resulting from becoming entangled in or tripping over a longer cord.
- Do not let the cord hang over the edge of a table or counter.
- Ensure that the cord is not in a position where it can be pulled inadvertently.

- Do not allow the cord to touch hot surfaces, and do not place it on or near a hot gas or electric burner or in a heated oven. Do not place the unit on a hot surface.
- This appliance is not suitable for outdoor use. Do not use this appliance for anything other than its intended purpose.
- Do NOT carry the unit by the power cord.
- Do not leave this appliance unattended during use. An appliance should never be left unattended when plugged in.
- The manufacturer does not accept responsibility for any damage or injury caused by improper or incorrect use or for repairs carried out by unauthorised personnel.
- In the event of technical problems, switch off the appliance and do not attempt to repair it yourself. Return the appliance to an authorised service facility for examination, adjustment, or repair.
- Always insist on the use of original spare parts. Failure to comply with the above-mentioned precautions and instructions will affect the safe operation of this machine.

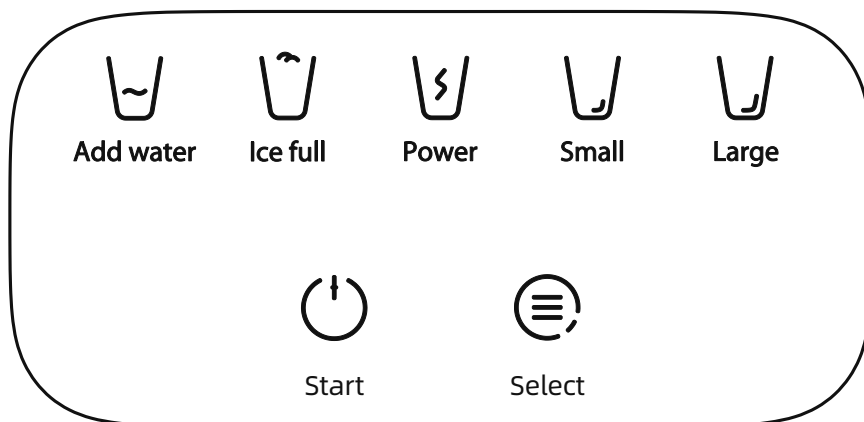
## **Warning**

1. The refrigerant and insulation blowing gas are flammable. When disposing of the appliance, do so only at an authorised waste disposal centre. Do not expose it to flames.
2. Fill with potable water only.
3. Opening the door for long periods of time can cause a significant increase of the temperature in the compartments of the appliance.
4. Clean the water tanks if they have not been used for 48 hours; flush the water system connected to a water supply if water has not been drawn for 5 days.
5. If the appliance is left empty for long periods, switch off, clean, dry, and leave the door open to prevent mould developing within the appliance.
6. Never touch the evaporator surface by hand when the ice maker is working. It may cause frostbite on your skin.

## Product Overview



## Control Panel



### Power button

On/off.

### Ice selection key

Select small ice/large ice.

### Automatic Cleaning Mode

In standby mode, press and hold the power button for 5 seconds to enter cleaning mode.

### Water shortage indicator

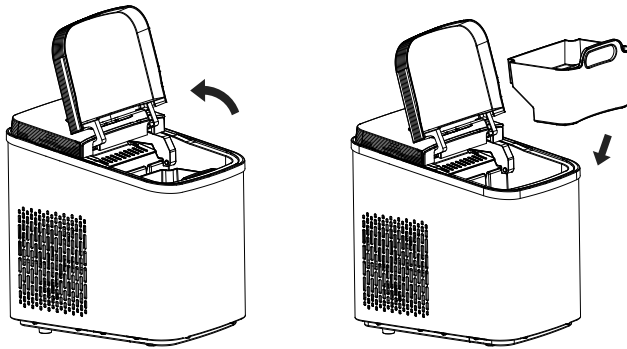
Water shortage corresponding indicator light on.

### Ice full indicator

The corresponding indicator light is on when the ice is full.

## Instructions for use

1. Remove all internal and external packaging, and check for ice baskets and spoons. If any attachments are missing, please contact customer support.
2. Remove the ice basket and scrub it in warm water, then wash the tank with warm water and a soft cloth.
3. Place the ice maker out of direct sunlight and away from heat and radiation. Place the ice maker horizontally and ensure that there is at least 15cm of space between the sides and the back.
4. Open the top cover and put the ice basket inside. (As shown below.)

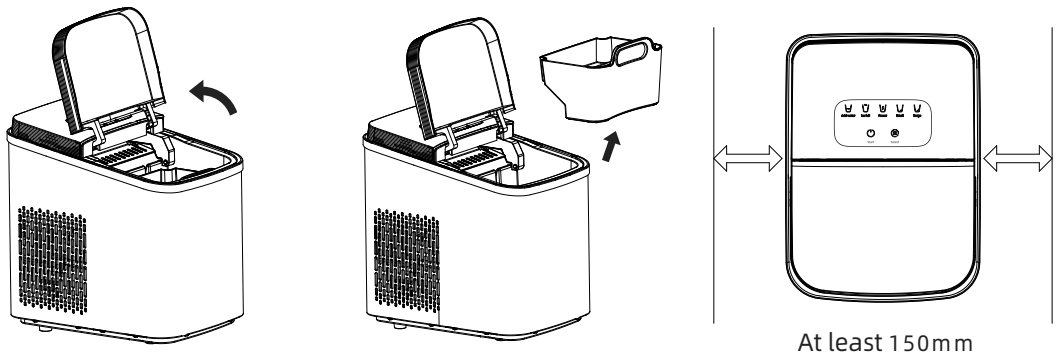


5. Touch the ice cube selection button to select the ice size. If the room temperature is below 15°C, to prevent ice linking, it is recommended that you choose small ice.
6. Open the top cover, take out the ice basket, add water to the water tank, keep the water level below the highest mark, put the ice basket back, and close the top cover.
7. Touch the power button on the control panel to start making ice. The initial volume of water should be more than 1L.
8. The duration of each ice-making cycle depends on the size of the selected ice cubes and room temperature.
9. The size of the ice cubes is related to the water temperature and the ambient temperature.
10. After the ice-making machine is started, if the pump cannot get out of the water, the ice maker will stop automatically, and the “add water” indicator light is on to indicate the water shortage. At this time, the water tank should be filled up, and then press the button to restart the ice-making.

11. If the ice basket is full, the making of ice stops automatically. It is recommended to change the water every 24 hours to keep the water clean. If the ice maker is not used for a long time, drain the remaining water from the tank.
12. Press and hold the power button for 5 seconds while in standby mode to enter the cleaning function. The cleaning time is 30 minutes. During cleaning, the big ice and small ice indicators flash alternately. After cleaning, the water will be discharged from the drain at the bottom of the machine.

## Daily Maintenance

- Before and after using this ice machine, it is recommended that you clean the whole machine.
- Open the control panel cover (as shown in the figure below) and the upper cover to take out the ice basket.
- To drain water, remove the drainage plug.
- Wipe the water tank with diluted cleaners, warm water, and a soft cloth.
- The outside of the machine should often use diluted cleaners and warm water.
- Wipe dry with a soft cloth.





# Troubleshooting

Problem	Reason	How to fix
"Add water" indicator light on.	Lack of water. Water tank bottom blocked	Add water to make ice. Clean the water tank.
Ice cubes sticking together.	The ice making cycle is too long.  The water temperature in this tank is too low.	Stop making ice. After the ice cubes melt, restart ice making and select small ice.  Change the water in the tank; the water temperature should be between 8°C and 32°C.
The ice making process is normal, but no ice is formed.	Leak in the refrigeration system. Clogged refrigeration system.	Contact support.

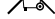
# Technical Specifications

Product Name:	DMD IceWhiz Ice Cube Maker Machine
Supplier Code:	DMDIM1
Power:	105W
Refrigerant:	R600a/24g
Noise:	50dB
Water tank capacity:	1.4L
Ice quantity per cycle:	9 pieces.
Rated Voltage:	220 - 240V AC 50Hz
Dimensions:	315x228x329mm

## Technical Support

If you require any technical support within the warranty period, please contact us on support@dmdcollective.co.uk and provide the product name and supplier code (see Technical Specifications) along with the technical query and proof of purchase.



The WEEE symbol  on this product means that this product should be ethically dismantled or recycled to minimise environmental impact. Please check with your local authority for more information.

## Important: Additional Safety Information

This device is **NOT** intended for use by persons (including children) with reduced physical, sensory or mental capabilities or lack of experience and knowledge, unless they are supervised or have been given instruction concerning use of the device by a person responsible for their safety.





**For Product Support:**

**E:** [support@dmdcollective.co.uk](mailto:support@dmdcollective.co.uk)

**T:** +44 (0)161 447 8597

---

[www.dmdcollective.co.uk](http://www.dmdcollective.co.uk)

**UK Registered Address:** The Ace Supply Co Ltd., Suite GA,  
Marsland House, Marsland Road, Sale M33 3AQ

**EU Registered Address:** Ace Supply Co (Europe) Ltd.  
25 Herbert Place, Dublin 2, D02 A098, Republic of Ireland