
Smart LED Toaster

Information for use



Thank you for purchasing the Smart LED Toaster from DMD Collective. This appliance allows you to toast, reheat, and defrost bread quickly and conveniently. With adjustable darkness settings and easy-to-use buttons, it is perfect for households, busy mornings, or small offices. To ensure safe and correct operation, please read this manual carefully before use.

Health and Safety Guidelines

- Always unplug the unit when not in use, before cleaning, or when adding or removing parts. Please read the instructions carefully before using any appliance.
- Always ensure that the voltage on the rating label corresponds to the mains voltage in your home.
- Incorrect operation and improper use can damage the appliance and cause injury to the user.
- The appliance is intended for household use only. Commercial use invalidates the warranty, and the supplier cannot be held responsible for injury or damage caused when using the appliance for any other purpose than that intended.
- Check the power cord and plug regularly for any damage. The cord or plug will need to be replaced if it is damaged.
- Do not use the appliance if it has been dropped or damaged in any way. If the unit is damaged, take it in for examination and/or repair by an authorized service agent.
- To reduce the risk of electric shock, do not immerse or expose the assembly, plug, or power cord to water or any other liquid.
- Never immerse the unit in water or any other liquid for cleaning purposes. Do not reach for an appliance that has fallen into the water. Unplug immediately.
- Remove the plug from the socket by gripping the plug. Do not pull on the cord to disconnect the appliance from the mains.
- Injury, fire, or electric shock could result from the use of accessory attachments that the manufacturer has not approved or supplied.
- A short cord is provided to reduce the hazards resulting from becoming entangled in or tripping over a longer cord.
- Do not let the cord hang over the edge of a table or counter.
- Ensure that the cord is not in a position where it can be pulled inadvertently.
- Do not allow the cord to touch hot surfaces, and do not place it on or near a hot gas or electric burner or a heated oven. Do not place the unit on a hot surface.
- This appliance is not suitable for outdoor use. Do not use this appliance for anything other than its intended purpose.
- Do NOT carry the unit by the power cord.
- Do not leave this appliance unattended during use. An appliance should never be left unattended when plugged in.
- The manufacturer does not accept responsibility for any damage or injury caused by improper or incorrect use or for repairs carried out by unauthorised personnel.
- In the event of technical problems, switch off the appliance and do not attempt to repair it yourself. Return the appliance to an authorised service facility for examination, adjustment, or repair.
- Always insist on the use of original spare parts. Failure to comply with the above-mentioned precautions and instructions will affect the safe operation of this machine.
- We do not recommend using extension cords with this product.

- **Note:** There will be some smoke at first; this is normal when using the toaster for the first time. The toaster reaches very high temperatures, especially around the bread slots.
- Do not place the power cord or any other objects over the bread slots while the toaster is in use.
- Do not try to remove bread or other items while the toaster is operating.
- Make sure the toast lever is in the 'UP' position before plugging in or unplugging the appliance.
- Do not insert metal objects or utensils into the toaster, as this may cause electric shock or fire.
- Surfaces may become very hot during use.
- Do not operate the toaster with an external timer or remote-control system.
- The outer surfaces and door of the toaster may become hot when in operation.

Product Overview & Control Panel



- 1 Toast Lever:** Lowers and raises the bread carriage.
- 2 Bread Slots:** Hold up to two slices of bread.
- 3 LED Display (1–6):** Shows toast darkness level.
- 4 Reheat Button:** Reheats toast without additional browning.
- 5 Darkness Control (1–6):** Adjusts toast darkness from light (1) to dark (6).
- 6 Stop Button:** Interrupts any operation immediately.
- 7 Darkness Control (1–6):** Adjusts toast darkness from dark (6) to light (1).
- 8 Defrost (Thaw) Button:** Thaws and toasts frozen bread automatically.
- 9 Plastic Base:** Stable base for the toaster.
- 10 Removable Crumb Tray:** Collects crumbs, located on the bottom side of the toaster for easy cleaning.

Getting Started: First-Time Use

1. Remove all packaging materials and any transport safety devices.
2. Check that all components listed in the manual are included.
3. Wipe the toaster with a damp cloth before use.
4. Ensure all parts are correctly assembled and the toaster is on a flat, stable surface.
5. Leave enough space around the toaster to prevent heat damage.
6. Plug the toaster into the mains power supply.
- 7. Initial Toasting (without bread):** Press the toast levers down on both sides until they latch.
8. Allow the toaster to run a full cycle without bread. When finished, the levers will automatically pop up.
9. The toaster is now ready for normal use.

Note: The first use may produce smoke or smells; this is normal.

Tips for Ideal Toasting

- Different types of bread have different moisture levels, so the same darkness setting may give different results.
- Slightly dry bread should be toasted at a lower darkness setting.
- Fresh or wholegrain bread may need a higher darkness setting for a golden result.
- Bread with an uneven surface may require a higher darkness setting.
- Thick slices may need more time; sometimes it may be necessary to toast twice.
- When toasting raisin bread, remove any raisins from the surface to prevent burning.
- If you toast only one slice, use a lower darkness setting.
- Toasting several slices in a row may make the bread slightly darker at the same setting.
- To toast frozen bread, waffles, or similar items, always use the **Defrost** button.

How to Toast

1. Place slices of bread into the bread slots.
2. Press the toast levers down until they latch; the **Stop** indicator light will turn on.
3. Select your desired darkness level using the **Darkness Control** (1–6).
4. You may stop toasting at any time by pressing the **Stop** button.
5. When toasting is complete, the bread will automatically pop up, and the toaster will switch off.

How to Thaw (Defrost) Frozen Bread

1. Place frozen bread slices or waffles into the bread slots.
2. Press the toast levers down until they latch; the **Stop** indicator light will turn on.
3. Select the desired darkness:
 - **Light** for thin frozen slices or bread from the fridge
 - **Medium** for frozen waffles
 - **Dark** for thick frozen slices
4. Press the **Defrost** button; the indicator lamp will light up.
5. The toaster will thaw and then toast the bread automatically.
6. You can stop the cycle at any time by pressing **Stop**.
7. When finished, the bread will pop up automatically, and the toaster will switch off.

Tip: Defrosting takes slightly longer than normal toasting.

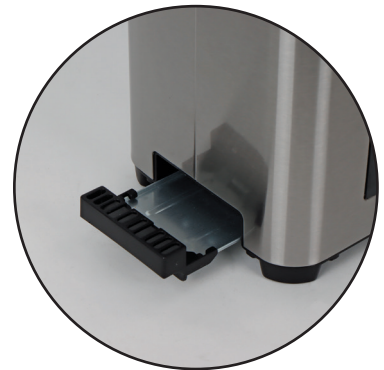
Reheating Toast

1. Place toast in the bread slots.
2. Press the toast levers down until they latch.
3. Press the **Reheat** button; the indicator lamp will turn on.
4. The toaster will warm the toast without additional browning.
5. The toast will pop up automatically when done.

Cleaning and Care

1. Allow the toaster to cool completely before cleaning.
2. Turn off and unplug the toaster before cleaning.
3. Do not immerse the toaster or cord in water, or wash in a dishwasher.
4. Wipe the toaster with a damp cloth and a little dishwashing detergent.
 - Avoid abrasive cleaners, steel wool, metal objects, strong chemicals, or disinfectants.
5. To remove stuck bread slices, unplug the toaster and turn it upside down, then shake gently.
 - Never use sharp or pointed tools.
6. Empty crumbs regularly from the removable crumb tray located on the bottom side of the toaster (Fig. 1):
 - Pull the tray out fully, empty crumbs, wipe with a damp cloth, dry thoroughly, and slide it back in.
7. Ensure the toaster is completely dry before using again.

Fig. 1



Troubleshooting


Problem	Cause	Solution
Toaster does not work	Not plugged in, plug not fully inserted, or mains power issue	Check plug connection and mains power
Bread not toasting evenly	Uneven slices or wrong darkness setting	Use uniform slices; adjust darkness; ensure bread is placed properly
Bread burns	Darkness setting too high or repeated toasting	Use a lower darkness level; avoid re-toasting the same bread
Bread stuck in slots	Bread too thick or inserted incorrectly	Unplug, allow to cool, gently shake upside down; never use sharp tools
Smoke during first use	Normal initial heating of elements	This is normal; run first cycle without bread
Toaster stops mid-cycle	Stop button pressed or power interrupted	Restart toasting; avoid pressing Stop unless desired
Indicator lights not working	No power or button issue	Check plug connection; switch on toaster; contact service if persists
Frozen bread not thawing	Defrost button not pressed or wrong darkness setting	Press Defrost button and select correct darkness level

Technical Support

If you require any technical support for your product within the warranty period, please contact us on support@dmdcollective.co.uk and provide the product name and supplier code (see Technical Specifications) along with the technical query and proof of purchase.

WEEE



The WEEE symbol  on this product means that this unit should be ethically dismantled or recycled to minimise environmental impact. Please check with your local authority for more information.

IMPORTANT: ADDITIONAL SAFETY INFORMATION

Warning: This product is not intended for use by children or individuals with reduced physical, sensory, or mental capabilities unless supervised by a responsible adult. Small parts may present a choking hazard. Always keep out of reach of children.

Technical Specifications

Product Name:	Smart LED Toaster
Supplier Code:	DMD161
Housing:	Stainless Steel
Voltage:	220-240V
Wattage:	1180-1400W
Power Cord:	75cm
Automatic Cut Off:	Yes
Functions:	Toast, Reheat, Defrost, Stop



Ace Supply Co Ltd.,
Suite GA, Marsland House,
Marsland Road, Sale M33 3AQ

For Product Support:
support@dmdcollective.co.uk

EU Regd. Address:
Ace Supply Co (Europe) Ltd.,
Dublin 2, D02 A098, ROI

www.dmdcollective.co.uk