

Garment Steamer

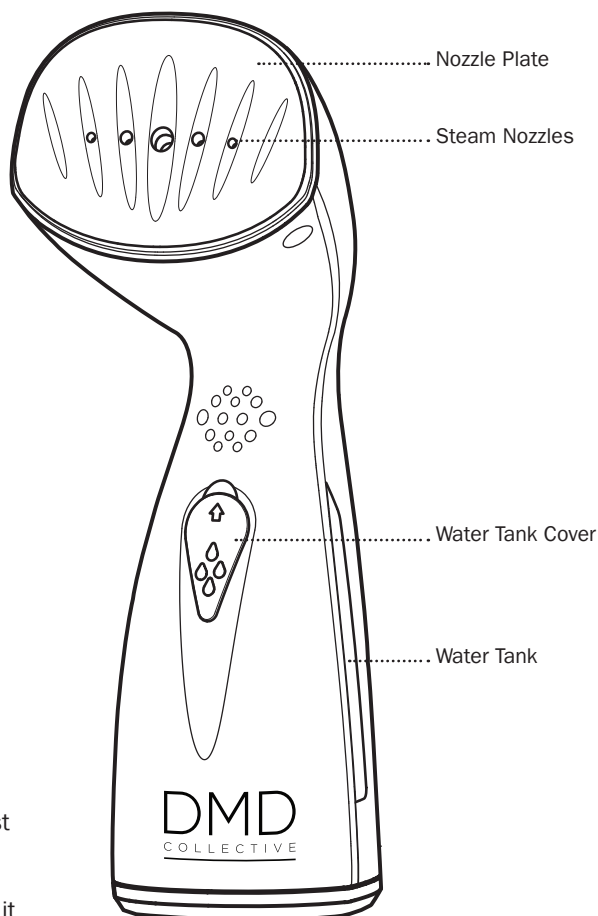
Information for use

What's included

- Garment Steamer
- 100ml Measuring Jug
- Lint Brush

Thank you for purchasing this Garment Steamer from DMD Collective.

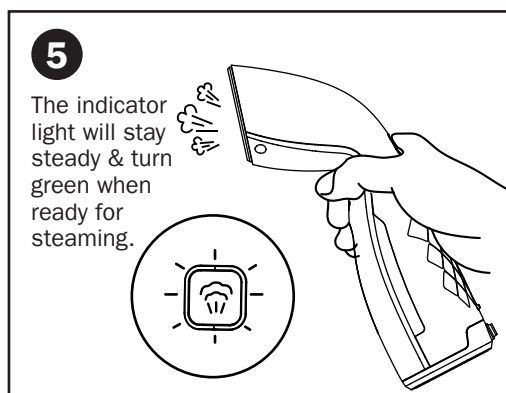
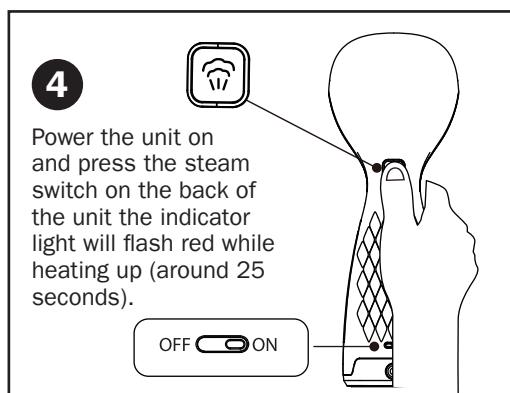
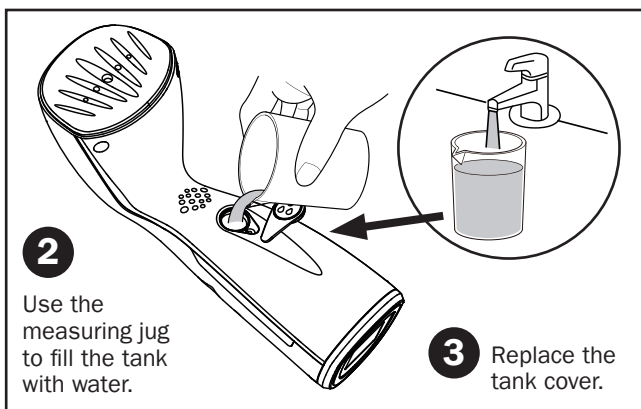
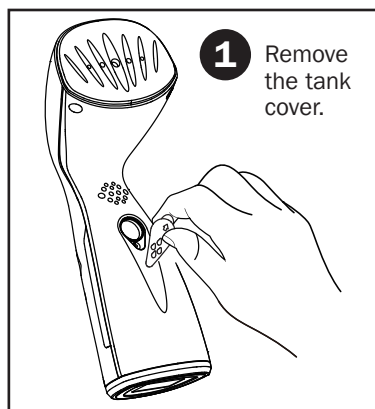
The Garment Steamer provides the best option for removing stubborn wrinkles on the go. Please read through ALL the information in this document and keep it for future reference.



Health and Safety Guidelines

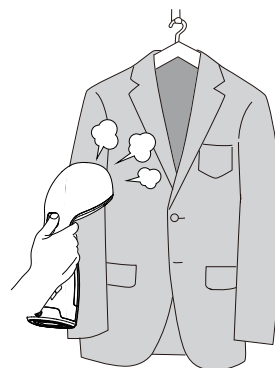
- Always unplug the unit when not in use, before cleaning, or when adding or removing parts. Please read the instructions carefully before using any appliance.
- Always ensure that the voltage on the rating label corresponds to the mains voltage in your home.
- Incorrect operation and improper use can damage the appliance and cause injury to the user.
- The appliance is intended for household use only. Commercial use invalidates the warranty, and the supplier cannot be held responsible for injury or damage caused when using the appliance for any other purpose than that intended.
- **Warning:** This product is not intended for use by children or individuals with reduced physical, sensory, or mental capabilities unless supervised by a responsible adult. Small parts may present a choking hazard. Always keep out of reach of children.
- Check the power cord and plug regularly for any damage. The cord or plug will need to be replaced if it is damaged.
- Do not use the appliance if it has been dropped or damaged in any way. If the unit is damaged, take it in for examination and/or repair by an authorized service agent.
- To reduce the risk of electric shock, do not immerse or expose the assembly, plug, or power cord to water or any other liquid.
- Never immerse the unit in water or any other liquid for cleaning purposes. Do not reach for an appliance that has fallen into the water. Unplug immediately.
- Remove the plug from the socket by gripping the plug. Do not pull on the cord to disconnect the appliance from the mains.
- Injury, fire, or electric shock could result from the use of accessory attachments that the manufacturer has not approved or supplied.
- A short cord is provided to reduce the hazards resulting from becoming entangled in or tripping over a longer cord.
- Do not let the cord hang over the edge of a table or counter.
- Ensure that the cord is not in a position where it can be pulled inadvertently.
- Do not allow the cord to touch hot surfaces, and do not place it on or near a hot gas or electric burner or a heated oven. Do not place the unit on a hot surface.
- This appliance is not suitable for outdoor use. Do not use this appliance for anything other than its intended purpose.
- Do NOT carry the unit by the power cord.
- Do not leave this appliance unattended during use. An appliance should never be left unattended when plugged in.
- The manufacturer does not accept responsibility for any damage or injury caused by improper or incorrect use or for repairs carried out by unauthorised personnel.
- In the event of technical problems, switch off the appliance and do not attempt to repair it yourself. Return the appliance to an authorised service facility for examination, adjustment, or repair.
- Always insist on the use of original spare parts. Failure to comply with the above-mentioned precautions and instructions will affect the safe operation of this machine.
- We do not recommend using extension cords with this product.
- Always disconnect the unit from the electrical outlet when filling or disposing of water as well as when the reservoir is empty or the unit is not being used.
- Do not add detergent or chemicals into the water reservoir or it will cause damage.
- The steam nozzle will become hot during use & emit hot steam. To avoid scalds, do not touch nozzle while using this unit. Never point the steam nozzle at people or pets.

Using The Garment Steamer



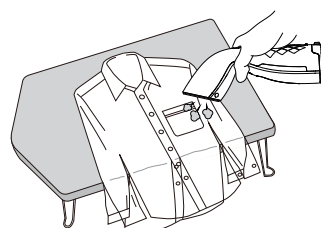
Steaming Hanging Clothes Tips

1. Hang the clothes on a hanger properly.
2. Direct the steam nozzle towards the garment from the top to bottom part.
3. IMPORTANT: Pull the tail of the clothes slightly tight with your free hand to make the steaming more effective.



Ironing Steaming Tips

1. Place the clothes or pants on a flat and heat resistant surface.
2. Direct the steam nozzle plate closely on the garment and move back and forth.



Storage

1. Unplug the power cord.
2. Allow the unit to cool completely.
3. Empty the water tank.
4. Keep the unit in a cool, dry place out of reach of children.

Troubleshooting


Problem	Possible Reason	Solution
Unit fails to heat up.	<ul style="list-style-type: none">• Unit is not plugged in.• Power switch is not on.	<ul style="list-style-type: none">• Plug into outlet with correct voltage.• Switch on to heat up.
Power light is on but fails to steam.	<ul style="list-style-type: none">• The water tank is empty.• The unit is broken.	<ul style="list-style-type: none">• Refill water (as instructions).• Unit needs repair.
When the machine is operating, some slight sound & vibration is observed.	<ul style="list-style-type: none">• This steamer operates with pump-system design.• The unit is operating without water.	<ul style="list-style-type: none">• Normal sound & vibration from the working pump.• Refill water and switch on the unit again.

Technical Support

If you require any technical support for your product within the warranty period, please contact us on **support@dmdcollective.co.uk** and provide the product name and supplier code (see Technical Specifications) along with the technical query and proof of purchase.

WEEE



The WEEE symbol  on this product means that this unit should be ethically dismantled or recycled to minimise environmental impact. Please check with your local authority for more information.

IMPORTANT: ADDITIONAL SAFETY INFORMATION

This device is **NOT** intended for use by persons (including children) with reduced physical, sensory or mental capabilities, or lack of experience and knowledge, unless they are supervised or have been given instruction concerning use of the device by a person responsible for their safety.

Technical Specifications

Product Name:

DMD Garment Steamer

Supplier Code:

DMD132

Voltage:

220V-240V ~ 50/60Hz

Tank Capacity:

100ml

Wattage:

900W

Heat Up Time:

25 seconds

Steam Time:

Up to 13 mins



Ace Supply Co Ltd.,
Suite GA, Marsland House,
Marsland Road, Sale M33 3AQ

For Product Support:
E: support@dmdcollective.co.uk
T: +44 (0)161 447 8597

EU Regd. Address:
Ace Supply Co (Europe) Ltd.,
Dublin 2, D02 A098, ROI

www.dmdcollective.co.uk